

Tube heat exchanger



Customer: Ventropack

Place of installation: Kremsmünster, Austria

Project description:

Replacement of one flue gas heat exchanger - 2-piece for heating of water for the district heating (heat recovery)

Product description

Type	GRU 640-265-20 U – Tube bundles
U-Tubes	P235GH-TC1, 2 x 160 Stk. Ø 25 x 2,5 mm
Tube bottom plate	P355GH
Water chamber	P235GH-TC1
Housing	S235JR
Medium around tubes:	flue gas entry 400 °C, exit 300 °C
Medium in tubes:	water inlet 110 °C, outlet 130 °C
Design pressure:	10 bar
Test pressure:	15 bar
Dimensions:	1600 x 3100 x 500(x2) mm
Weight:	2 x 1600 kg

Tube heat exchanger



Customer: Purea (TKV)

Place of installation: Regau, Austria

Project description:

2 Tube bundle heat exchangers (stainless steel) – with these waste water of the vessel is cooled with fresh water bevor discharging in the sewage plant

Product description

Type	2x HM41-21-RRR 170-WK Fixed straight tube bundles, counter flow in a row
Cooling tubes	Stainless steel 1.4404, Ø 19 x 0,8 mm
Tube bottom plate	Stainless steel 1.4404
Housing	Stainless steel 1.4404
Water chamber	Stainless steel 1.4404, with removable lid for easy cleaning
Power	361 kW
Cooling	4,62 m ³ /h waste water from 100 °C to 30 °C
Cooling medium	17,3 m ³ /h fresh water from 12 °C to 30 °C
Dimensions	Ø 219 mm; length 2000 mm
Weight	2 x 150 kg

Tube heat exchanger



Customer: KELAG

Place of installation: Koralpe, Austria

Project description: 1 Underfloor water cooler

The heat exchanger is installed in the turbine-sewer of the machine unit 1 for cooling the water cooling circuit for the generator.

Product description

Type	K-170-1870x350-4 Straight tube bundle – stainless steel
Tubes	1.4571, 544 Stk. Ø 18 x 1,5 mm
Tube bottom plates	1.4571
Water chambers	1.4571
Supporting structure	1.4301
Power:	1.000 kW
Medium around tubes:	Plant water 16 °C
Medium in tubes:	130 m ³ /h cooling water from 26,6 °C to 20 °C
Heat exchanger surface:	170 m ²
Dimensions:	6400 x 1850 x 600 mm
Weight:	3.100 kg

Tube heat exchanger



Customer: AVL List

Place of installation: DAF, Netherlands

Project description:

2 Exhaust gas water heat exchanger, exhaust gas side connected in series
For cooling of exhaust gas in an engine test bench (altitude simulation system)

Product description

Type	GWK 38 Straight tube bundle with compensator	GWK 28,5 Straight tube bundle
Cooling tubes	Stainless steel 1.4571, Ø 18 x 1 mm	Stainless steel 1.4571, Ø 18 x 1 mm
Tube bottom plates	Stainless steel 1.4571	Stainless steel 1.4571
Housing	Stainless steel 1.4571	Stainless steel 1.4571
Exhaust gas chambers	Stainless steel 1.4571	Stainless steel 1.4571
Deflections	Stainless steel 1.4571	Stainless steel 1.4571
Cooling power	506 kW	101 kW
Cooling	4000 kg/h exhaust gas from 388 to 40°C	4000 kg/h exhaust gas from 40 to 20°C
Cooling medium	43,6 m³/h water from 28°C to 38°C	8,7 m³/h water from 8°C to 18°C
Weight	ca. 700 kg	ca. 585 kg

Tube heat exchanger



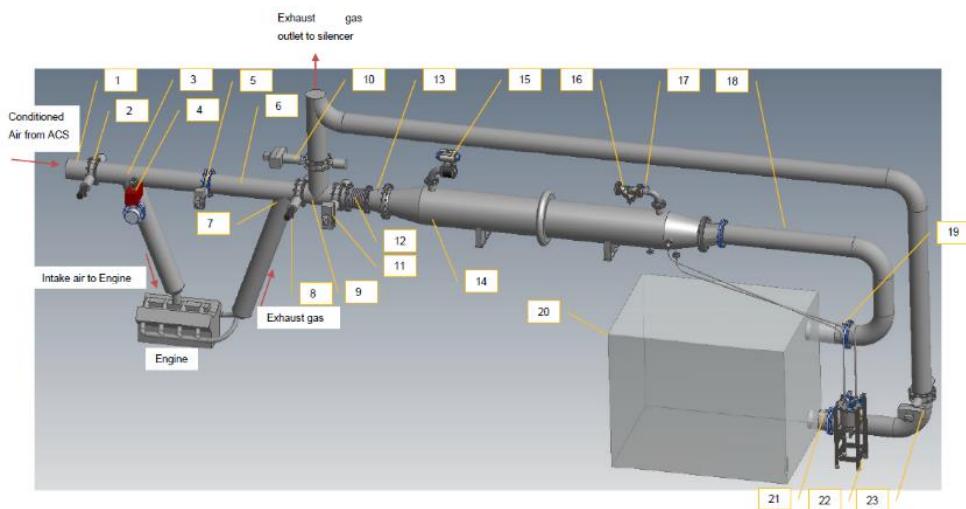
Customer: Blechbau Willitsch für AVL List

Project description:

1 Exhaust gas water heat exchanger for cooling of exhaust air in an engine test bench (altitude simulation system)

Product description

Type	WT-132-61-1 Straight tube bundle with compensator
Cooling tubes	Stainless steel 1.4571 Ø 18 x 1 mm
Tube bottom plates	Stainless steel 1.4571
Housing	Stainless steel 1.4571
Exhaust gas chambers	Stainless steel 1.4571
Deflections	Stainless steel 1.4301
Cooling power	465,8 kW
Cooling	4564 kg/h exhaust gas from 348,8°C to 40°C
Cooling medium	40,3 m³/h water from 30°C to 40°C
Test pressure	1,1 bar exhaust gas side, 10 bar water side
Weight	ca. 1850 kg



Tube heat exchanger



Customer: SCHAKO KG

Place of installation: Kolbingen, Germany

Project description:

2 Tube bundle heat exchangers (stainless steel) with compensator for the research center for fire protection technology for cooling of hot air

Product description

Type	HM11-21-RRR 200-WK Fixed straight tube bundle with compensator
Cooling tubes	Stainless steel 1.4404
Tube bottom plate	Stainless steel 1.4404
Housing	Stainless steel 1.4404
Water chamber	Stainless steel 1.4404
Power	85 kW
Cooling	1.495 m ³ /h air from 450 °C to 40 °C
Cooling medium	1,2 m ³ /h water 9 °C to 70 °C
Dimensions	Ø 219 mm; length 2560 mm
Weight	172 kg

Tube heat exchanger



Customer: Bertsch Foodtec

Place of installation: Hörsching, Austria

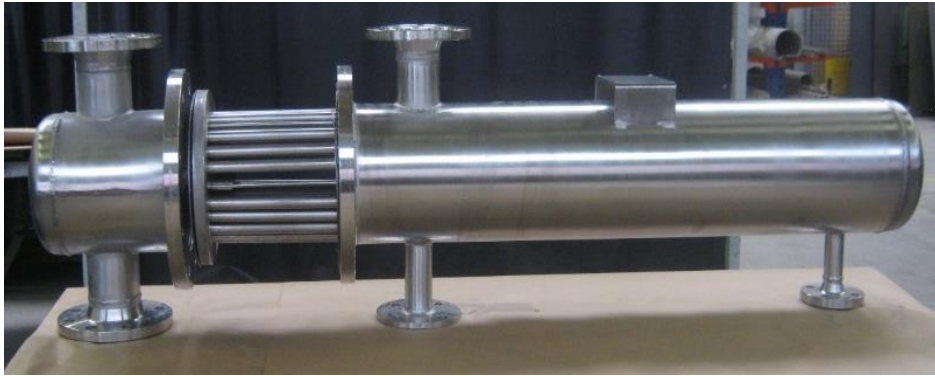
Project description:

1 Steam water heat exchanger for heating of water

Product description

Type	N-A 2,0/9,5 U Tube bundle
Cooling tubes	Stainless steel 1.4404
Tube bottom plate	Stainless steel 1.4404
Housing	Stainless steel 1.4404
Water chamber	Stainless steel 1.4404
Deflections	Stainless steel 1.4404
Heating	7 m ³ /h water 70 °C
Heating medium	405 kg/h saturated steam 143,7 °C
Operating pressure	6 bar
Test pressure	10 bar
Weight	110 kg

Tube heat exchanger



Customer: Berglandmilch

Place of installation: Wörgl, Austria

Project description:

1 Steam water heat exchanger for heating of CIP detergent
Reproduction of an old heat exchanger

Product description

Type	N-C 2,0/8 U Tube bundle
Cooling tubes	Stainless steel 1.4404
Tube bottom plate	Stainless steel 1.4404
Housing	Stainless steel 1.4404
Water chamber	Stainless steel 1.4404
Deflections	Stainless steel 1.4404
Weight	ca. 150 kg

Tube heat exchanger



Customer: Eregli Demir Ve Celik Fabrikalari T.A.S.

Place of installation: Eregli, Zonguldak, Turkey

Project description:

2 Water-water heat exchanger for water recooling

Produktbeschreibung

Type	WWK 65
Cooling tubes	CuNi30Fe1Mn
Bottom plates	CuZn38AlFeNiPbSn
Casing	P235GH
Water chambers	P265GH RILSAN-coating
Diversions	brass
Power	2.444 kW
Cooling	346 m ³ /h water 67% / glycol 33% from 47,2°C to 40°C
Coolant	450 m ³ /h seawater from 26 °C to 30,7 °C
Pressure loss	50 kPa water side, 20 kPa sea water side
Cooling area	65 m ²
Weight	1200 kg

Tube heat exchanger



Customer: Aichelin

Place of installation: Germany

Project description:

1 Oil-water heat exchanger + 1 spare tube bundle for oil cooling

Product description

Type	N-A 2,5/12	U-tube bundle
Cooling tubes	Stainless steel 1.4301	
Bottom plates	Stainless steel 1.4301	
Casing	Stainless steel 1.4301	
Water chamber	Stainless steel 1.4301	
Diversions	Stainless steel 1.4301	
Power	154,6 kW	
Cooling	30 m ³ /h oil from 90,5°C to 80°C	
Coolant	6,7 m ³ /h water from 25°C to 45°C	
Pressure loss	40 kPa oil side, 10 kPa water side	
Cooling area	8,03 m ²	
Weight	265 kg	

Tube heat exchanger



Customer: TKV OÖ, Austria

Place of installation: Regau, Austria

Project description:

2 Water-water heat exchanger for water recooling

Product description

Type	WR-37-40-1
Cooling tubes	Stainless steel 1.4571
Bottom plates	Stainless steel 1.4571
Casing	Stainless steel 1.4571
Water chambers	Stainless steel 1.4571
Diversions	Stainless steel 1.4301

Cooling area	37 m ²
Weight	940 kg

Suitable for operating pressure of max. 6 bar and operating temperature of max. 100°C
Chamber lids with swivel device